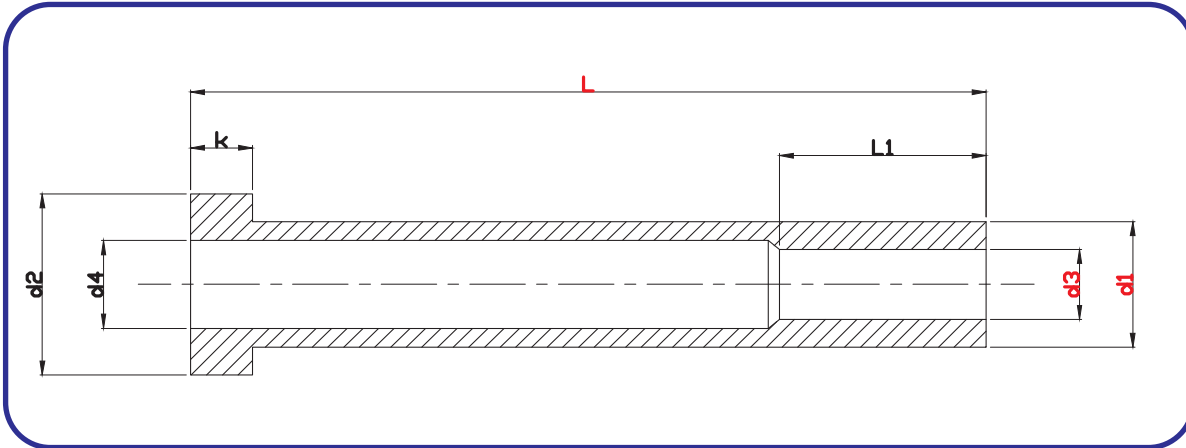


► Ejector Sleeves Pin JIS Std (PPES)



Material :- Silver Steel (SS), Hot Die Steel (HDS)

Hardness :- Silver Steel 48 – 52 HRC Hot Die Steel - 45 - 47 HRC (Core), 66 - 68 HRC (Surface)

Surface Treatment :- Blackodised , Nitrieded

d1 g6	d3 h7	d2 -0.1	K -0.05	d4 -0.2	L1	R	L (+1)										
							60	75	100	125	150	175	200	225	250	275	300
3	1.5	6	3	1.8	25	0.3
	1.6			2		
4	2	8	3	2.4	35	0.3
	2.2			2.5			
5	2.5	10	3	3	45	0.3
	2.7			3			
	3			3.5		
	3.2			3.5		
6	3.5	12	5	4	45	0.5
	3.7			4			
	4			4.5			
8	4.2	14	5	5	45	0.5
	5			5.5			
	5.2			5.5			
10	6	16	5	6.5	45	0.5
	6.2			6.5			
12	8	20	7	8.5	45	0.8
	8.2			8.5			
14	10	22	7	10.5	45	0.8
16	12	22	7	12.5	50	0.8

Order Type :- Code (Material) X d1 X d3 X Length (L)

Example :- PPES (HDS) X 8 X 5 X 250